

# July 2010: Strawberry Fun Runner (19 1/2" x 47")

## Cutting:

Background: 2 blocks 9 1/2" square (you can cut larger and trim down if you wish)

9 Patch: Cut 4 squares 3 1/2" of Background or other colour

Contrast 9 patch: 5 - 3 1/2" squares (I chose a burgundy print)

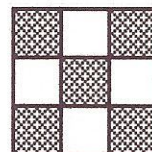
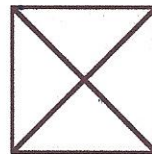
Setting Triangles: 1 - 14" square, cut twice on the diagonal

Inner Border: 3 - 1 1/4" strips

Outer Border: 4 - 3" strips

Binding: 4 - 2 1/4" strips

Applique: Scraps



Sewing: Assemble 9 patch and use photo as guide for putting runner blocks and borders together.

Good Luck!

